

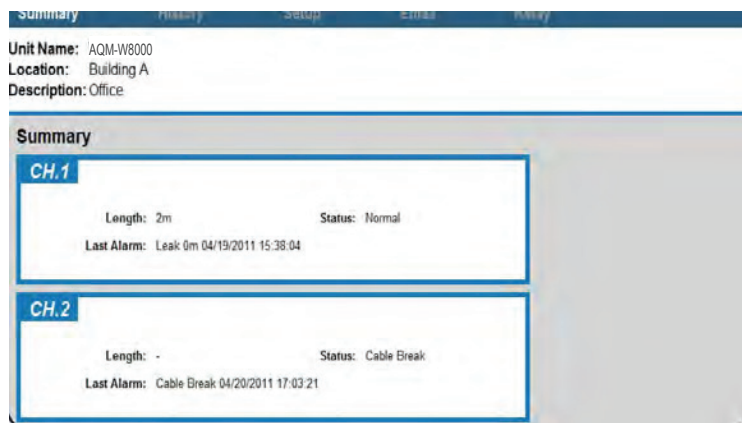


## Liquid & Water Leakage Alarm System We Based Monitoring and Alarm Notification

# AQM-W8000

Aquaman AQM-W8000 panel has 2 Input Channels and can monitor up to 200m sensing cable per channel. Liquid and Water Sensing Cable can be attached to expand the liquid leak detection capabilities throughout the facility.

AQM-W8000 provides real-time status of the site through the Internet (TCP/IP). It also sends alarm messages to users via e-mail. Audible and visual alarm are integrated into AQM-W8000 to indicate the status locally.

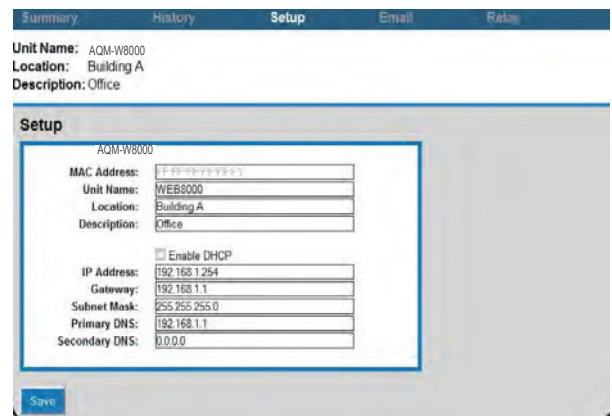


## WEB STATUS:

Live status and history is only a webpage away. The AQM-W8000 built in web server provides quick and easy information about your monitored conditions. Even time stamped history reports are readily available online.

## WEB PROGRAMMING:

Built in web server for easy access to programming and status. Just point your browser to the AQM-W8000's webpage and fill in the blanks for a quick configuration.



## MULTIPLE ALARM NOTIFICATION:

When monitored conditions detect any liquid or water leakage, the AQM-W8000 will notify you immediately by sending out email alarm messages. You can also view the status of the monitored conditions at the local panel or at the AQM-W8000's webpage.

Summary History Setup Email Relay			
Unit Name: AQM-W8000			
Location: Building A			
Description: Office			
History			
Date	Time	Channel	Event
04/20/2011	17:03:21	CH 2	Cable Break
04/20/2011	11:16:38	CH 2	Return Normal (Mail Sent)
04/20/2011	11:16:32	CH 2	Leak 20m (Mail Sent)
04/20/2011	11:05:16	CH 2	Return Normal (Mail Sent)
04/20/2011	11:05:11	CH 2	Leak 20m (Mail Sent)
04/20/2011	11:04:41	CH 2	Return Normal (Mail Sent)
04/20/2011	11:04:36	CH 2	Leak 18m (Mail Sent)
04/19/2011	15:38:31	CH 2	Return Normal
04/19/2011	15:38:25	CH 2	Leak 20m
04/19/2011	15:38:10	CH 1	Return Normal
04/19/2011	15:38:04	CH 1	Leak 0m
04/19/2011	15:27:40	CH 1	Return Normal (Mail Sent)
04/19/2011	15:16:18	CH 1	Leak 0m (Mail Sent)
04/19/2011	15:16:18	CH 1	Return Normal (Mail Sent)

## ALARM HISTORY:

The AQM-W8000 can log up to 4,000 entries of Leak and Cable Break Alarm History. The eventlog history can export to XML or HTML files for data analysis.



## MULTIPLE LANGUAGE LCD DISPLAY:

The AQM-W8000 can have the LCD display either in English or in Simplified Chinese.

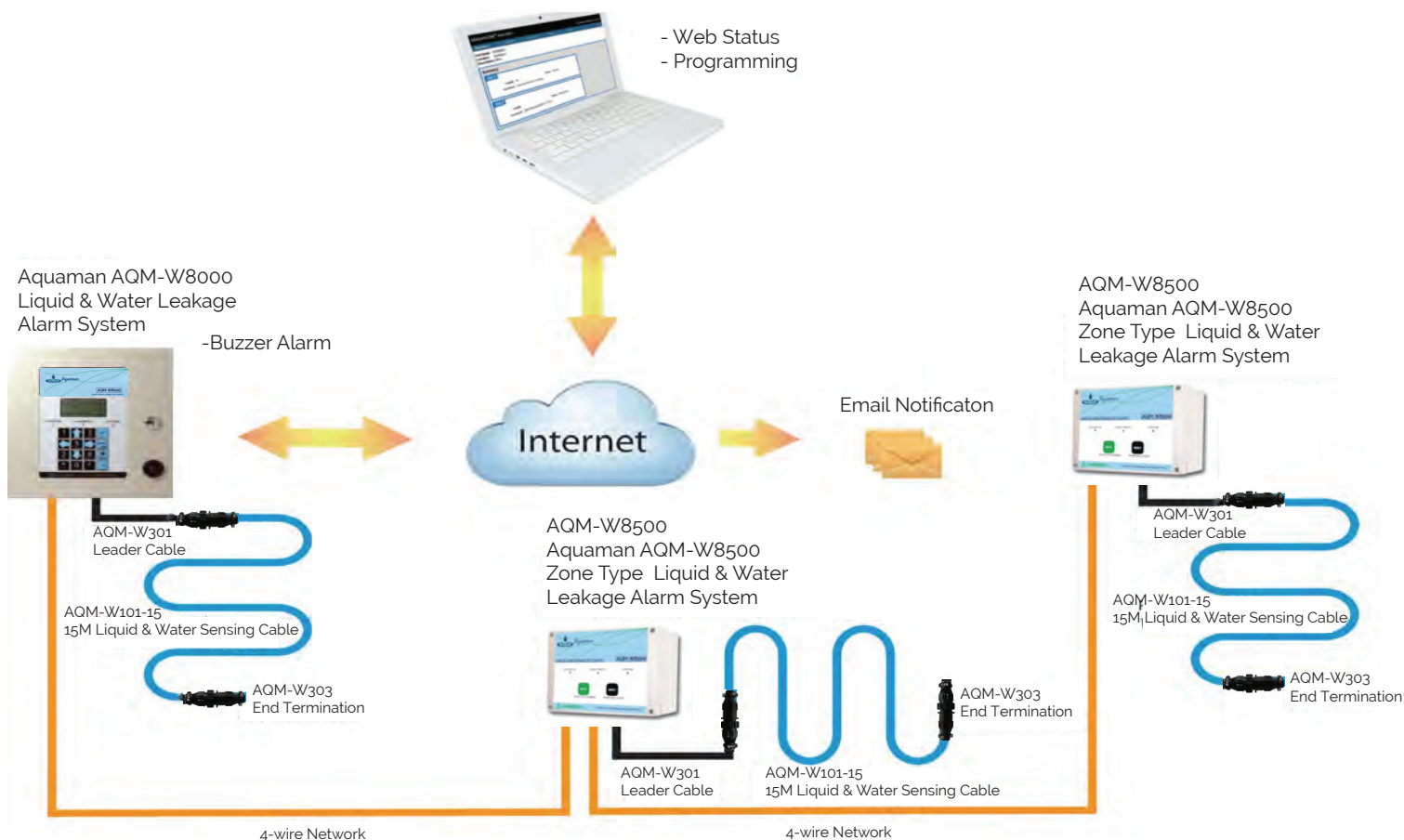
## 2 CHANNELS, 4 RELAYS:

Two input channels can be connected to a liquid & water sensing cable or a zone type water leakage detector. Four dry contact relay outputs are available.

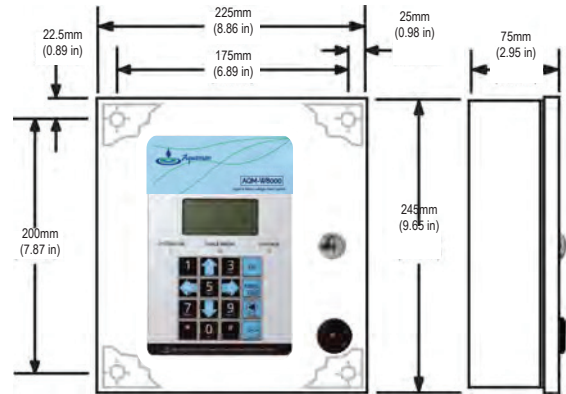
## OPTIONAL BATTERY BACKUP:

With the battery backup, the AQM-W8000 can stay operational for two full hours while the power is out.

## TYPICAL APPLICATIONS



## PRODUCT DIMENSIONS



## SPECIFICATIONS

### INPUTS:

- 2 Input Channels
- Cable measured in Meter/Feet
- Max Length of Cable is 200m/650 feet
- Adjustable Sensitivity, ranging from 000-999 $\mu$ A
- Cable Resistance ranging from 00.00-99.99 ohm/meter

### OUTPUTS:

- 4 Relay Outputs (1A - 120VAC, 1A - 24VDC)
  - Normally Closed/Normally Open
- Switched when Leakage, Cable Break or Fault occurs

### LOCAL INDICATORS:

- LED
  - Power On (Green)
  - Cable Break (Orange)
  - Leakage (Red)
- 90dB Buzzer as audible alarm indicator

### POWER REQUIREMENTS:

- 12V  $\pm$  15 %
- Connection via wire Terminal
- Max Power Consumption is 5.4W
- Optional Backup Battery (7.2VDC, Ni-MH)

### PANEL FEATURES:

- LCD Display (128 x 64 pixels with backlight)
- Panel Language available in English or Chinese
- With Key Pad (4 x 4, 16 buttons) and Mute Button
- Built-in Web Server and Real Time Clock
- Power On Self Test
- Able to locate Point of Leakage
- Support Wall Mounting Installation
- Password Protection

### COMMUNICATION PORTS:

- RJ-45 Port
- Connection via UTP Cable

### WEB SERVER:

- Support the following Browser in English and Chinese: Internet Explorer 8, Firefox 4, Safari 5, Chrome 5 or above
- Support DHCP and Static IP Address
- Real-time Status (Auto update)
- Sending Email Alert to 4 Contacts via External SMTP Server
- Event Logging with 4,000 Entries (All samples include time stamp and date)
- Event Log Export available in XML and HTML format
- Password Protection

ACCESSORIES

ZONE TYPE LIQUID & WATER ALARM SYSTEM:

- Aquaman AQM-W8500 ..... AQM-W8500

SENSING CABLE:

- Liquid & Water Sensing Cable, 5m ..... AQM-W101-5M
- Liquid & Water Sensing Cable, 10m ..... AQM-W101-10M
- Liquid & Water Sensing Cable, 15m ..... AQM-W101-15M
- Liquid & Water Sensing Cable, 30m ..... AQM-W101-30M



SYSTEM COMPONENTS:

- Modular Leader Cable, 5m ..... AQM-W301
- Modular Jumper Cable, 5m ..... AQM-W302-5M
- Modular Jumper Cable, 10m ..... AQM-W302-10M
- Modular Jumper Cable, 15m ..... AQM-W302-15M
- Modular Jumper Cable, 30m ..... AQM-W302-30M
- Modular End Termination ..... AQM-W303
- Modular Branch Connector ..... AQM-W304
- Hold Down Clips with Adhesive Backs ..... AQM-W305
- Identification Tags for Sensing Cable ..... AQM-W306
- Testing Tool for Sensing Cable ..... AQM-W307



\* Photos are for reference only.  
\* Specification subject to change without notice.